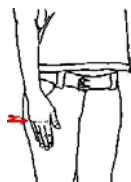


# B.I.N.G.O. – Key Signs with Song Lyrics



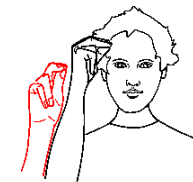
There was a farmer who



had a dog,



and Bingo (fingerspell)



was his name-O



B.



I.



N.



G.



O.,



B.



I.



N.



G.



O.,



B.



I.



N.



G.



O.,



And Bingo (fingerspell)



was his name-O.



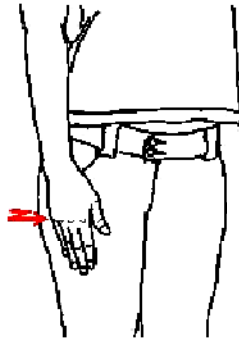
© Scope (Vic) Ltd 2008. Nursery Rhymes to Sing, See and Sign.  
 Developed by The Communication Resource Centre - A Service of Scope  
[www.scopevic.org.au](http://www.scopevic.org.au) - see disclaimer  
 Supported by The Jack Brockhoff Foundation, Makaton Victoria and hey dee ho music.  
 Sign illustrations developed by Aileen Ryan 'Hands Can Talk' © 2008 [www.handscantalk.com.au](http://www.handscantalk.com.au)

# B.I.N.G.O. - Key Signs



**FARMER -**

Place thumb edge of open dominant hand on chest, palm down. Move in arc to below waist level turning to palm up.



**DOG -**

Hit thigh with open dominant hand, twice.

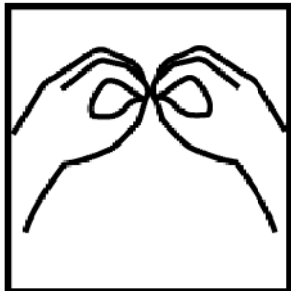
**BINGO -**

Use fingerspelling of 'B' for name 'Bingo'



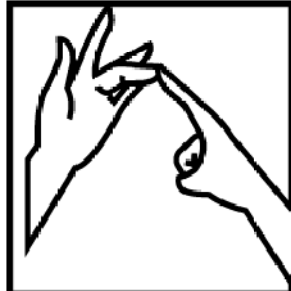
**NAME -**

Place extended dominant index and middle fingers on ball of thumb, place tips of formation on temple and move formation forward, turning palm away from body.



**"B" -**

Use fingerspelling



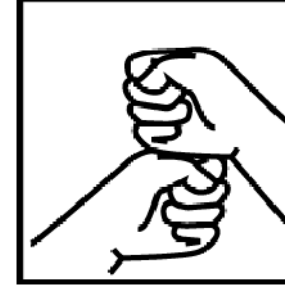
**"I" -**

Use fingerspelling



**"N" -**

Use fingerspelling



**"G" -**

Use fingerspelling



**"O" -**

Use fingerspelling

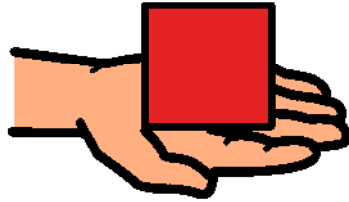


# B.I.N.G.O. - Picture Song Board

farmer



had

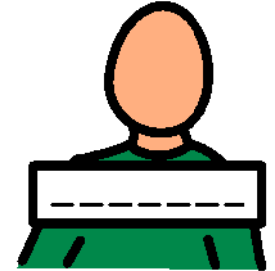


dog



BINGO

name



B

I

N

G

O

Instructions: Point to the pictures of 'key words' at the same time as singing the song. Have fun!



© Scope (Vic) Ltd 2008. Nursery Rhymes to Sing, See and Sign.  
Developed by The Communication Resource Centre - A Service of Scope  
[www.scopevic.org.au](http://www.scopevic.org.au) - see disclaimer  
Supported by The Jack Brockhoff Foundation and hey dee ho music.  
The Picture Communication Symbols © 1981-2007 by Mayer-Johnson LLC.  
All rights reserved worldwide. Used with permission.