

Miss Polly – Key Signs with Song Lyrics



Miss Polly



had a dolly



who was sick,



sick,



sick,



So she called



for the doctor



to come quick,



quick,



quick.



The Doctor



came



with his bag



and his hat

* Use natural gesture

And he knocked



on the door

* Use natural gesture

with a ratta tat tat.

* Refer to Key Signs Sheet for recommended natural gesture



© Scope (Vic) Ltd 2008. Nursery Rhymes to Sing, See and Sign.
Developed by The Communication Resource Centre - A Service of Scope
www.scopevic.org.au - see disclaimer

Supported by The Jack Brockhoff Foundation, Makaton Victoria and hey dee ho music.
Sign illustrations developed by Aileen Ryan 'Hands Can Talk' © 2008 www.handscantalk.com.au



He looked



at the dolly

* Use natural gesture

and he shook his head



He said "Miss Polly



put her straight to bed".



He wrote



on a paper



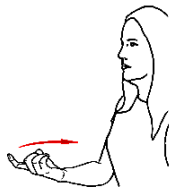
for a pill,



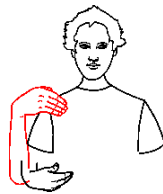
pill,



pill,



I'll be back



in the morning,



yes I will,



will,



will

* Refer to Key Signs Sheet for recommended natural gesture



© Scope (Vic) Ltd 2008. Nursery Rhymes to Sing, See and Sign.
Developed by The Communication Resource Centre - A Service of Scope
www.scopevic.org.au - see disclaimer

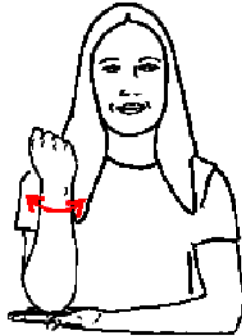
Supported by The Jack Brockhoff Foundation, Makaton Victoria and hey dee ho music.
Sign illustrations developed by Aileen Ryan 'Hands Can Talk' © 2008 www.handscantalk.com.au

Miss Polly - Key Signs



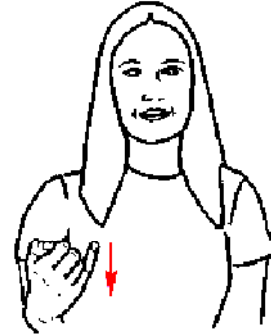
GIRL (MISS POLLY)-

Extend dominant index finger, stroke non-dominant cheek with edge of finger, twice.



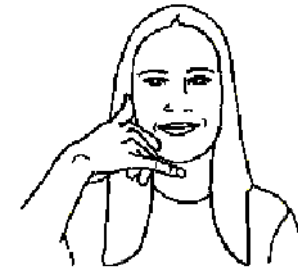
DOLLY -

Clench dominant hand, forearm upright. Place non-dominant hand under elbow, palm up, and twist dominant fist.



SICK -

Extend dominant little finger. Slide little finger edge down same side of upper chest.



CALLED -

Extend dominant little finger and thumb. Hold formation at side of head. (Natural gesture)



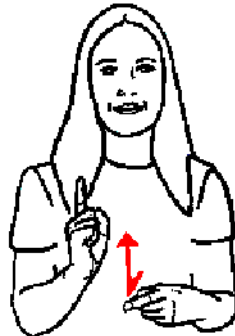
DOCTOR-

Extend dominant thumb, index and middle fingers - hold non-dominant wrist with dominant hand formation.



COME -

Extend dominant crooked index finger and hold in front of body. Move hand in an arc towards centre of chest. (Natural gesture)



QUICK -

Extend index fingers of both hands. Quickly tap index finger of dominant hand on to index finger of non-dominant hand.



BAG -

Hold dominant fist at waist height. Move formation up and down, twice.



HAT -

Open dominant hand, palm down and tap top of head, twice. (Natural gesture)

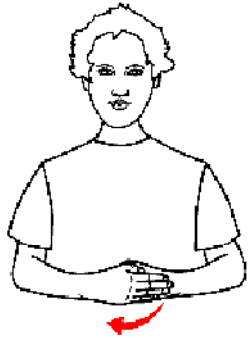
KNOCKED/RATTA TAT TAT -

Natural gesture
e.g. As if knocking on a door



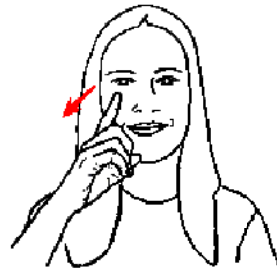
© Scope (Vic) Ltd 2008. Nursery Rhymes to Sing, See and Sign.
Developed by The Communication Resource Centre - A Service of Scope
www.scopevic.org.au - see disclaimer
Supported by The Jack Brockhoff Foundation, Makaton Victoria and hey dee ho music.
Sign illustrations developed by Aileen Ryan 'Hands Can Talk' © 2008 www.handscantalk.com.au

Miss Polly - Key Signs



DOOR -

With both hands open, place non-dominant hand fingernails on heel of dominant hand. Tap back of non-dominant hand with dominant hand, twice.

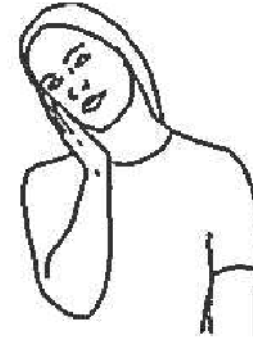


LOOKED -

Move dominant index finger forward from eye.

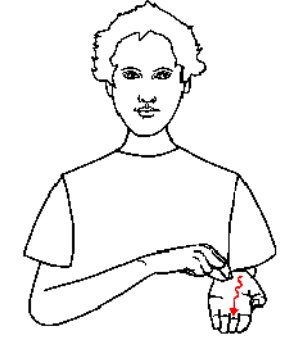
SHOOK HEAD - Natural gesture

e.g. shake head from side to side



BED -

Place open dominant hand against side of face. Tilt head to dominant side



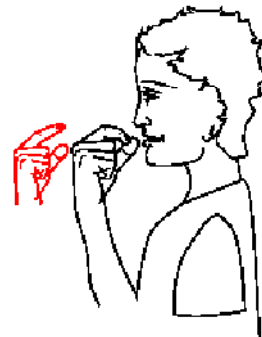
WROTE/WRITE -

Form "O" with index finger and thumb of dominant hand. Move along palm of open non-dominant hand as though writing



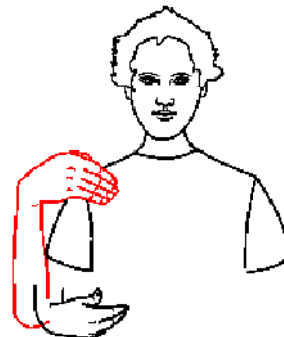
PAPER -

Knock fists together, palms facing, twice.



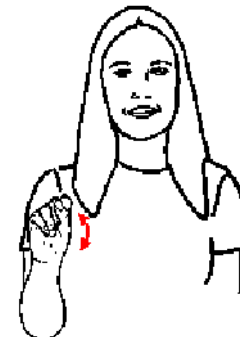
PILL -

Make an "O" with index finger and thumb of dominant hand. Move this formation towards mouth whilst "opening" index finger and thumb.



MORNING -

Move open dominant hand, blade touching waist to tap chest with fingertips.


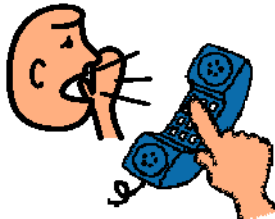

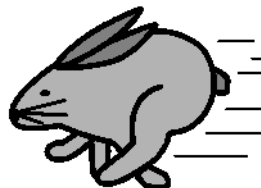
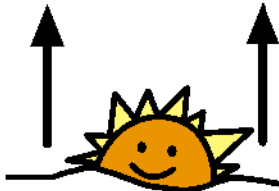

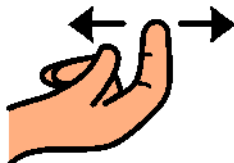

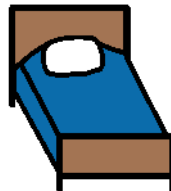



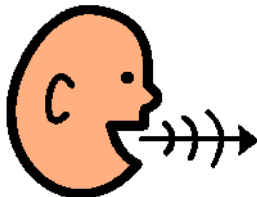



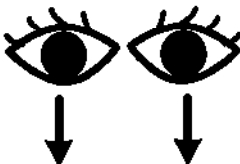


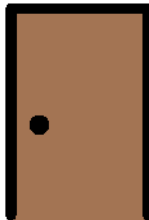


YES -

Move dominant fist up and down from the wrist, twice



Miss Polly - Picture Song Board

<p>Miss Polly</p> 	<p>called</p> 	<p>sick</p> 	<p>quick</p> 	<p>morning</p> 
<p>dolly</p> 	<p>come/came/ come back</p> 	<p>shook his head</p> 	<p>put her straight to bed</p> 	<p>pill</p> 
<p>doctor</p> 	<p>knock/ratta tat tat</p> 	<p>"he said"</p> 	<p>bag</p> 	<p>hat</p> 
<p>yes I will</p> 	<p>looked</p> 	<p>wrote</p> 	<p>paper</p> 	<p>door</p> 

Instructions: Point to the pictures of 'key words' at the same time as singing the song. Have fun!



© Scope (Vic) Ltd 2008. Nursery Rhymes to Sing, See and Sign.
 Developed by The Communication Resource Centre - A Service of Scope
www.scopevic.org.au - see disclaimer
 Supported by The Jack Brockhoff Foundation and hey dee ho music.
 The Picture Communication Symbols © 1981-2007 by Mayer-Johnson LLC.
 All rights reserved worldwide. Used with permission.